

# Asprey®

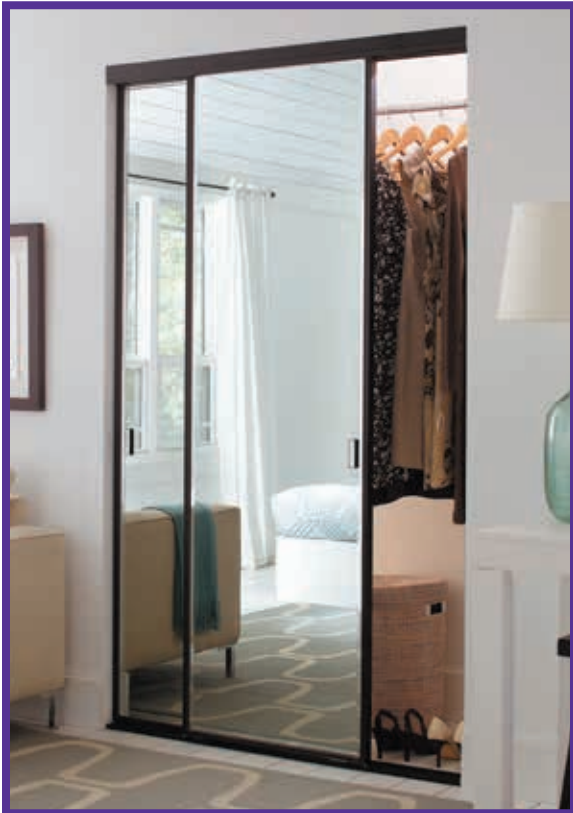
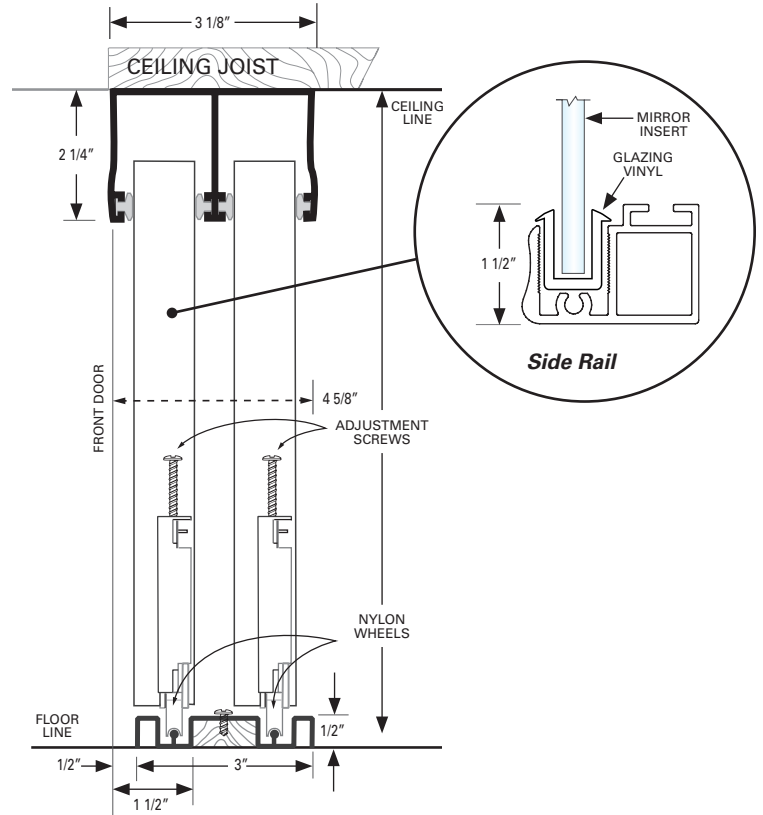


Photo shows a Bronze finish with Duraflect® copper-free mirror insert



Technical Illustration

### Finishes:

- Bright Clear, Bright Gold, Bronze, Brushed Nickel, Satin Clear and Satin Gold

### Insert Type:

- 6mm Duraflect® copper-free mirror
  - » Elimination of copper dramatically improves quality and life expectancy
  - » This creates a durable, superior grade mirror with exceptional quality

### Frame Type:

- Heavy-duty commercial quality anodized aluminum frame

### Track and Channel:

- Aluminum track and channel
- Ultraglide® 2 1/4" deep felt-lined top channel
- Bottom rolled with jump-proof track
- Top channel and bottom track with finish to match

### Product Details:

- 1 1/2" diameter wheels with hardened steel races and 5/32" ball bearings in extra-heavy 18 gauge steel housing

### Product Details (cont.):

- Heavy gauge 6063 extrusions (6463 is polished for bright colors)
- Color matched mirror handles
- Side rails are hollow extrusions (tubular) for added strength
- Mitered corners
- Color coordinated glazing vinyl
- Duraflect® copper-free mirror panel has 400lb category II safety backing

### Sizes:

- Standard sizes
  - » Width: 48", 60", 72", 84", 96", 108", 120", 144", 168" and 192"
  - » Height: 81" and 96"
- Custom sizes
  - » Maximum individual panel width is 60"
  - » Maximum opening height is 120"
- Adjustment range for opening height is up or down 1/2"

### Optional Upgrades:

- 1" or 1 1/2" bevel all
- Polished or 1/2" beveled mirror fascia
- Decorative back painted glass inserts
- Decorative mirror inserts
- Decorative wood grain inserts
- One piece Ultraglide® triple track and channel up to 288"
- Face beveling design (v-groove)



**Contractors Wardrobe®**

Quality.  
"We Set The Standard."

26121 Avenue Hall, Valencia, CA 91355 | Phone: 661.257.1177 Fax: 661.257.4907 | CwDoor.com

Asprey®-SpecSheet-0618